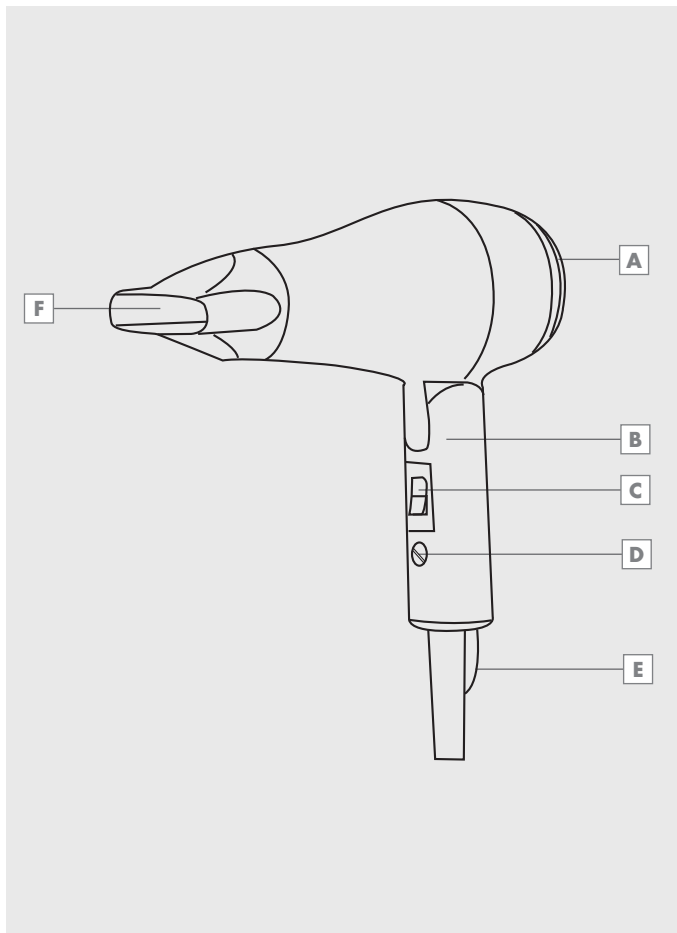


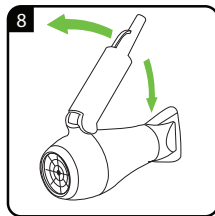
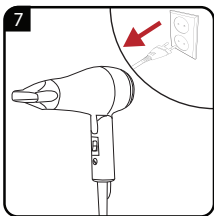
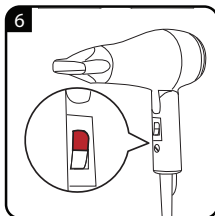
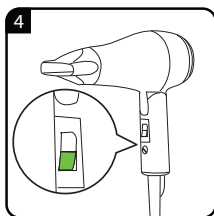
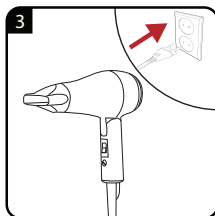
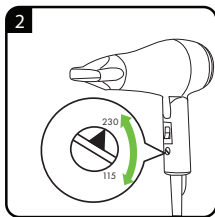
# GRUNDIG

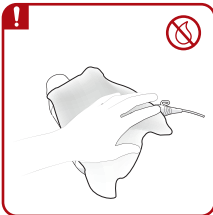
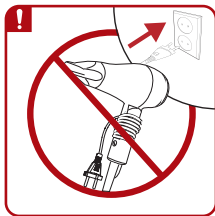
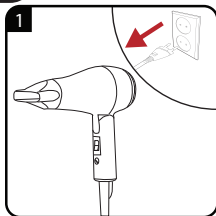
## HAIR DRYER TRAVEL HD 1800

EN









<b>DE</b>	BETRIEB	REINIGUNG UND PFLEGE
<b>EN</b>	OPERATION	CLEANING AND CARE
<b>TR</b>	KULLANIM	TEMİZLEME VE BAKIM
<b>FR</b>	FONCTIONNEMENT	NETTOYAGE ET ENTRETIEN
<b>ES</b>	FUNCIONAMIENTO	LIMPIEZA Y CUIDADOS
<b>HR</b>	RAD	ČIŠĆENJE I ODRŽAVANJE
<b>PL</b>	OBSŁUGA	CZYSZCZENIE I KONSERWACJA

## SAFETY

---

Please read this instruction manual thoroughly prior to using this appliance! Follow all safety instructions in order to avoid damage due to improper use!

This appliance is intended for domestic use only.

- Keep the instruction manual for future use. Should a third party be given the appliance, please ensure the instruction manual is included.
- Never use the appliance in the bath, shower or over a wash basin filled with water; nor should it be operated with wet hands.



- Do not immerse the appliance in water or let it come into contact with water, even during cleaning.
- Warning: Do not use this appliance near bathtubs, showers, basins or other vessels containing water.

## SAFETY

---

- Before cleaning or user maintenance operation first plug out.
- If the appliance is used in the bathroom, it is essential that the power plug is pulled out after use, as water close to the appliance can still constitute a danger, even if the appliance is switched off.
- If not already in use, installing a residual current-operated protective device (RCD) is recommended for additional protection with a rated residual operating current not exceeding 30 mA in the electrical circuit of your bathroom. Ask your electrician for advice.
- Never place the appliance on soft cushions or blankets during operation.
- Ensure that the air induction and output openings are not covered during operation.
- The appliance is equipped with an overheating protection system.
- Unplug the appliance after use. Do not disconnect the plug by pulling on the cord.

## SAFETY

---

- Never use the appliance if it or the power cord is visibly damaged.
- Never wind the power cord around the appliance, as this can result in damage. Check the power cord and the appliance regularly for visible damage.
- Our GRUNDIG Household Appliances meet applicable safety standards, thus if the appliance or power cord is damaged, it must be repaired or replaced by a service centre to avoid any dangers. Faulty or unqualified repair work may cause danger and risks to the user.
- Always keep the appliance out of the reach of children.
- This appliance can be used by children aged from 8 years and above and persons with reduced physical, sensory or mental capabilities or lack of experience and knowledge if they have been given supervision or instruction concerning use of the appliance in a safe way and understand the hazards involved. Children shall not play with the appliance.



## SAFETY

---

Cleaning and user maintenance shall not be made by children without supervision.

- Do not dismantle the appliance under any circumstances. No warranty claims are accepted for damage caused by incorrect handling.

# OVERVIEW

---

Dear customer,

congratulations on the purchase of your GRUNDIG Travel Hair Dryer HD 1800.

Read the following user notes carefully to ensure full enjoyment of your quality Grundig product for many years to come.

## A responsible approach!



GRUNDIG focuses on contractually agreed social working conditions with fair wages for both internal employees and suppliers. We also attach great importance to the efficient use of raw materials with continuous waste reduction of several tonnes of plastic every year. Furthermore, all our accessories are available for at least 5 years.

For a future worth living.

Grundig.

## Controls and parts

See the figure on page 3.

- A** Back cover
- B** Handle
- C** Switch
- D** Voltage switch
- E** Hanging loop
- F** Concentrator

## Settings

Your appliance has the following settings:

### Speed level **D**

- **0** : off
- **1** : low temperature/speed
- **2** : high temperature/speed

### Voltage switch **C**

- **120** (110-120 V~)
- **240** (220-240 V~)

## Notes

- Check if the mains voltage on the type plate on the handle of the appliance corresponds to your local mains supply.

## Cleaning and care

- Turn the appliance off and unplug the power cord from the wall socket.
- Before cleaning, allow the appliance to cool down. The appliance can become very hot.

## Note

- Before using the appliance after cleaning, dry all parts carefully with a soft cloth or paper towel.

## Storage

- If you do not plan to use the appliance for a long period of time, please store it carefully.
- Make sure that it is unplugged, has completely cooled down and is completely dry.
- Do not wrap the power cord around the appliance.
- Keep the appliance in a cool, dry place.
- Make sure that the appliance is kept out of the reach of children.

## Compliance with the WEEE Directive and Disposing of the Waste Product:

This product complies with EU WEEE Directive (2012/19/EU). This product bears a classification symbol for waste electrical and electronic equipment (WEEE).



This symbol indicates that this product shall not be disposed with other household wastes at the end of its service life. Used device

must be returned to official collection point for recycling of electrical and electronic devices. To find these collection systems please contact to your local authorities or retailer where the product was purchased. Each household performs important role in recovering and recycling of old appliance. Appropriate disposal of used appliance helps prevent potential negative consequences for the environment and human health.

## Compliance with RoHS Directive

The product you have purchased complies with EU RoHS Directive (2011/65/EU). It does not contain harmful and prohibited materials specified in the Directive.

# INFORMATION

---

## Package information



Packaging materials of the product are manufactured from recyclable materials in accordance with our

National Environment Regulations. Do not dispose of the packaging materials together with the domestic or other wastes. Take them to the packaging material collection points designated by the local authorities.

## Technical data



### Power supply :

110-120V/220-240V~ 50-60Hz

**Power** : 1000-1200 W

Technical and design modifications reserved.



For commissioning, general use and cleaning, please observe the instructions on pages 4-5 of this operating manual.